

- 1
- 2
- 3
- 4
- 5
- 6
- 7
- 8
- 9
- 10
- 11
- 12
- 13
- 14
- 15
- 16
- 17
- 18

**TYPES**

- Type **A**: without no-slip disk
- Type **B**: with no-slip disk
- Type **C**: with O-ring

**Base**

Steel, epoxy resin coating  
black, RAL 9005, textured finish

**Threaded studs / Hexagon nut ISO 8675**

Steel, zinc plated, blue passivated

**No-slip disk**

black, NBR  
85±5 Shore A

**O-ring**

black, NBR  
≈ 70 Shore A

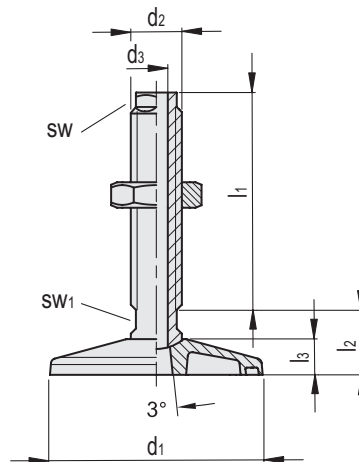
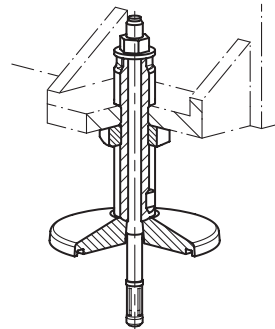
**FEATURES AND APPLICATIONS**

Machine feet GN 37 are characterized by their solid construction and large variety. They are used especially on large and heavy systems and machines. The through-hole allows the machine feet to be attached centrally to the ground, making them ideal for compressive and tensile loads.

Foot plates and threaded studs are not connected together, during setup they are automatically centered by the radius at the contact point. Type B with rubber underlay prevents slipping to the side, protects delicate surfaces and dampens vibrations and tremors. Type C with O-ring provides a seal over the ground to prevent the build-up of dirt under the foot. When used in conjunction with a collection pan, lubricants for example cannot escape to reach the underlying surface.



**Application example**

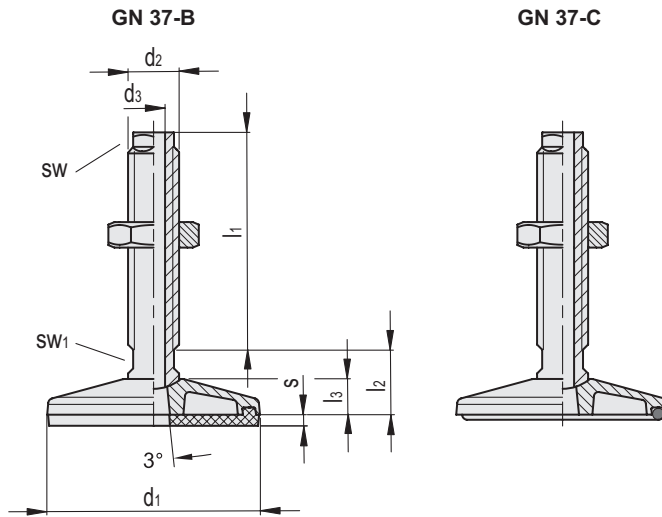


Conversion Table	
1 mm = 0.039 inch	
d1	
mm	inch
80	3.12
100	3.90
125	4.88
160	6.24
200	7.80

**GN 37-A**

**METRIC**

Code	Description	d1	d2	d3 H13	l1	l2	l3	sw	sw1	Static load [kN]	⚖️
GN.33251	GN 37-80-M20X1.5-60-A	80	M20x1.5	9	60	27.5	15	16	16	40	405
GN.33256	GN 37-100-M24X2-70-A	100	M24x2	11	70	30	17.5	19	19	50	664
GN.33261	GN 37-125-M30X2-90-A	125	M30x2	13.5	90	38	21	24	24	80	1288
GN.33266	GN 37-160-M36X2-110-A	160	M36x2	17.5	110	45	27	30	30	120	2456
GN.33271	GN 37-200-M42X2-125-A	200	M42x2	22	125	55	33	36	36	150	4375



## GN 37-B

METRIC

Code	Description	d1	d2	d3 H13	l1	l2	l3	s	sw	sw1	Static load [kN]	⚖️
GN.33252	GN 37-80-M20X1.5-60-B	80	M20x1.5	9	60	27.5	15	3	16	16	20	425
GN.33257	GN 37-100-M24X2-70-B	100	M24x2	11	70	30	17.5	4	19	19	30	708
GN.33262	GN 37-125-M30X2-90-B	125	M30x2	13.5	90	38	21	5	24	24	50	1370
GN.33267	GN 37-160-M36X2-110-B	160	M36x2	17.5	110	45	27	6	30	30	70	2620
GN.33272	GN 37-200-M42X2-125-B	200	M42x2	22	125	55	33	8	36	36	110	4701

## GN 37-C

Code	Description	d1	d2	d3 H13	l1	l2	l3	sw	sw1	Static load [kN]	⚖️
GN.33253	GN 37-80-M20X1.5-60-C	80	M20x1.5	9	60	27.5	15	16	16	40	408
GN.33258	GN 37-100-M24X2-70-C	100	M24x2	11	70	30	17.5	19	19	50	671
GN.33263	GN 37-125-M30X2-90-C	125	M30x2	13.5	90	38	21	24	24	80	1298
GN.33268	GN 37-160-M36X2-110-C	160	M36x2	17.5	110	45	27	30	30	120	2477
GN.33273	GN 37-200-M42X2-125-C	200	M42x2	22	125	55	33	36	36	150	4402

